

Mike
Dobson



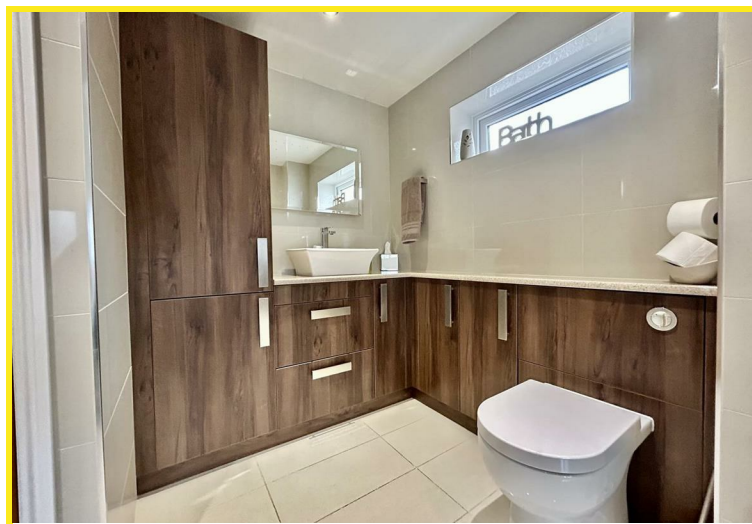
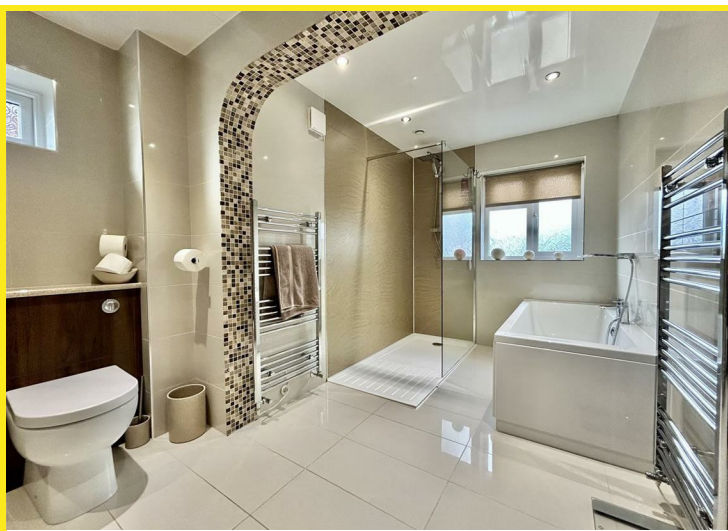
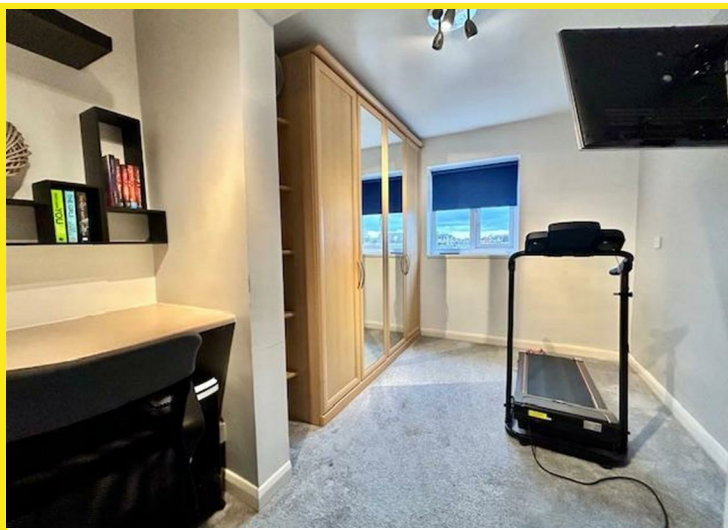
10 Long Meadow Court
Garforth, Leeds, LS25 2BS

£355,000

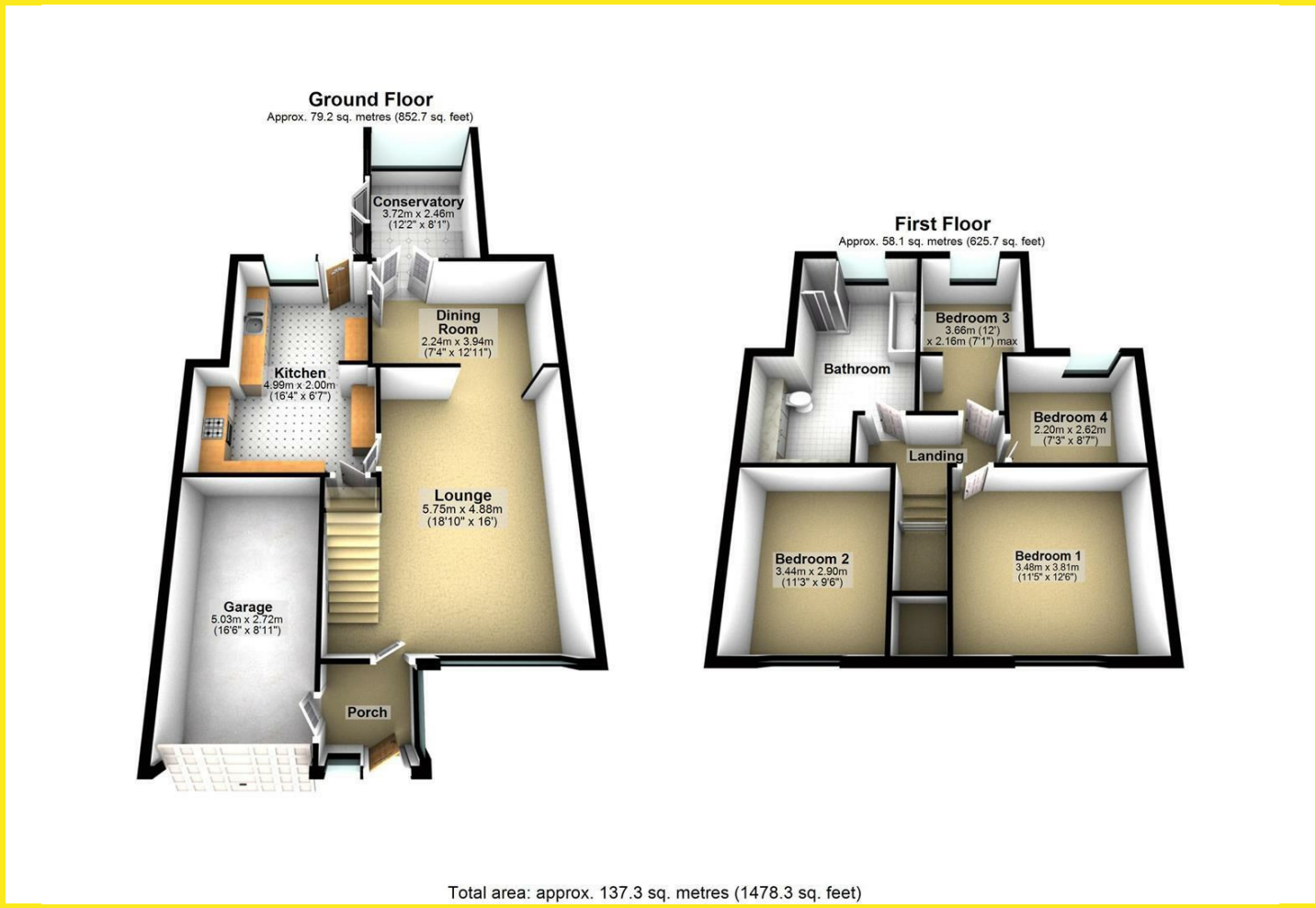
10 Long Meadow Court

Mike Dobson Estate Agents are pleased to bring to the market this immaculately presented four bedroom extended semi-detached property, having been refurbished by the current owner to a high standard throughout offering modern and spacious living. The accommodation briefly comprises: entrance porch, lounge being open plan to the dining room, conservatory, kitchen, first floor landing leading to four bedrooms and larger than average bathroom/WC. In addition, the property has PVCu double glazed windows including French doors leading from the conservatory to the rear garden, composite front entrance door, conservatory with insulated and tiled roof to create a useable room all year round, modern fitted kitchen with a range of units to high and low levels, integrated appliances to include four ring induction hob with extractor over, double electric oven, microwave, fridge and dishwasher, feature fireplace to lounge with inset electric fire, access point to the loft with pull down ladder and being boarded, fitted wardrobes to three bedrooms, a stunning and contemporary bathroom/WC with a modern four piece white suite comprising walk in double shower, rectangular panelled bath with mixer shower taps, vanity unit with wash basin and concealed cistern low flush WC and also benefits from underfloor heating. Outside, the front of the property is mainly brick paved to provide ample off road parking for multiple cars. There is an integral garage with up and over door, power and light which houses the combination boiler. To the rear is a private and enclosed garden with composite decking and a large paved seating area with pebbled borders, keeping it low maintenance.

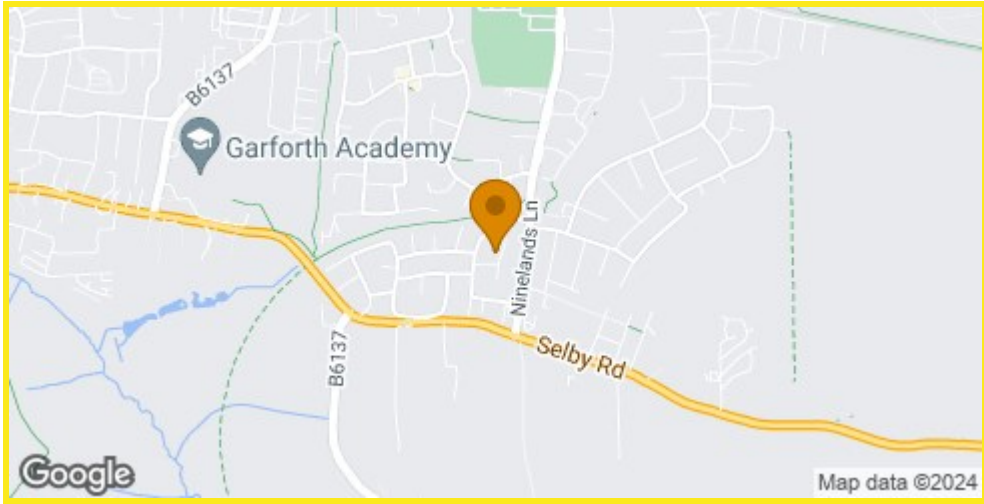




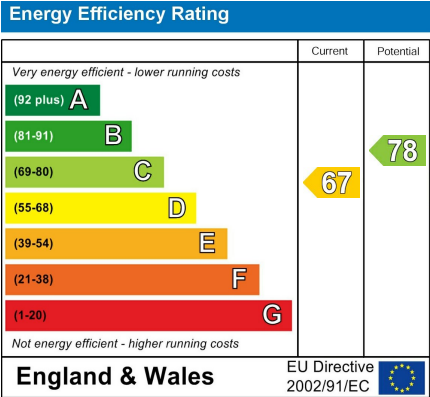
Floor Plan



Area Map



Energy Efficiency Graph



Directions

From the A63 Leeds/Selby Road turn into Garforth at the traffic lights on to Ninelands Lane by the Fire Station. Continue on Ninelands Lane and take your second left onto Long Meadows then your first left onto Long Meadow Court.